



Flat 1201, Westminster Tower 3 Albert Embankment, London, SE1 7SP
£5,350,000



Flat 1201, Westminster Tower 3 Albert Embankment, London, SE1 7SP

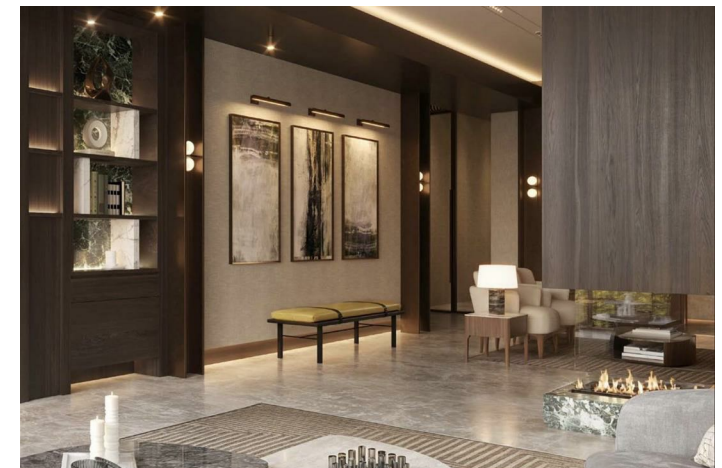
£5,350,000

Q1-Q2 2028 Completion | Views of Westminster Palace | 24/7 Concierge | Gym | Cinema Room | Reading Room | Lounges | Great Transport Links | WeChat: CLH-Consultant.

Description



Situation



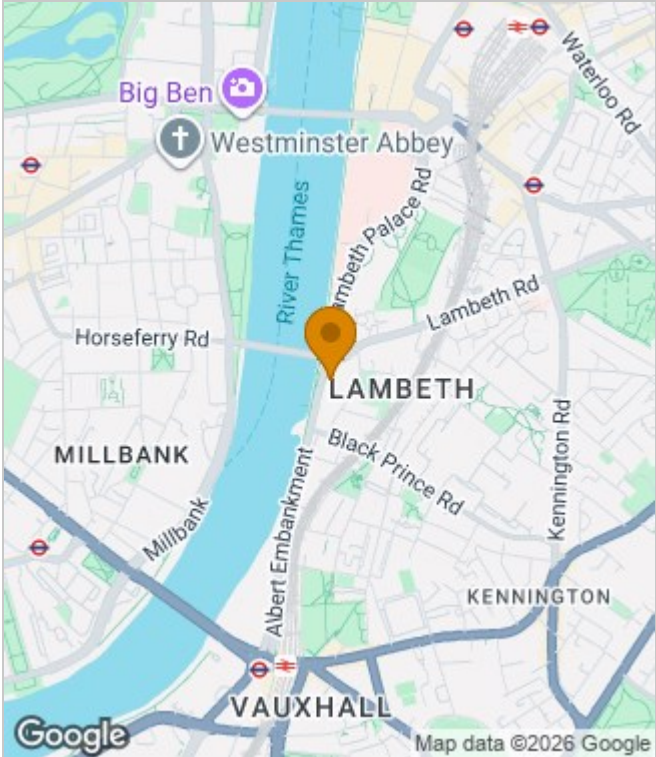
null
Council Tax Band: New Build
Available:

Floor Plans

THE PARLIAMENT
3 BEDROOM APARTMENT

LIVING / DINING / KITCHEN	10.00m x 7.80m	32'9" x 25'7"
PRINCIPAL BEDROOM	5.50m x 4.30m	18'0" x 14'0"
BEDROOM 2	5.10m x 4.60m	16'8" x 15'1"
BEDROOM 3	4.00m x 3.20m	13'1" x 10'6"

Area Map



Energy Performance Graph

These particulars, whilst believed to be accurate are set out as a general outline only for guidance and do not constitute any part of an offer or contract. Intending purchasers should not rely on them as statements of representation of fact, but must satisfy themselves by inspection or otherwise as to their accuracy. No person in this firms employment has the authority to make or give any representation or warranty in respect of the property.